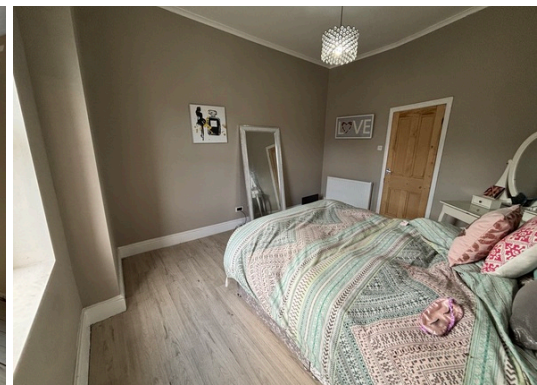
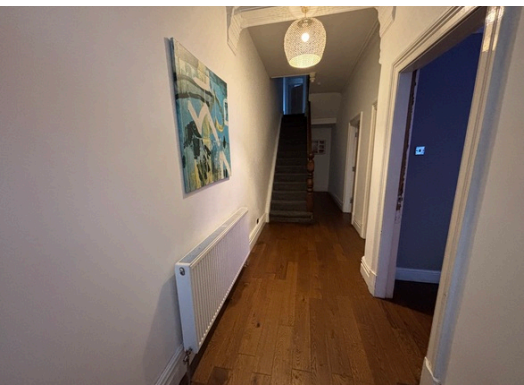


Oxford Avenue
Bootle, L20

Freehold
£335,000



- * Substantial Seven Bedroom House
- * Three Floors of Accommodation
- * Cul-de-sac Location
- * Two Reception Rooms
- * Breakfast / Dining Kitchen with Island
- * Two Bathrooms



97 | SOUTH ROAD | WATERLOO | L22 0LR
Tel: 0151 920 2404
E-mail: info@logicstates.co.uk





- * Substantial Seven Bedroom House
- *Three Floors of Accommodation
- *Cul-de-sac Location
- *Two Reception Rooms
- *Breakfast / Dining Kitchen with Island
- *Two Bathrooms
- *Ground Floor Wet Room
- *Six Double Bedrooms and One En suite
- *Walk in Attic
- *Brick Outbuilding to rear of the Garden
- *Potential to develop further
- *Rear Walled Area
- *Freehold
- *Outside WC
- *2,960 Square Feet
- *Within Derby Park Conservation Area

Title Number - MS138173

Local Authority - Sefton

Council tax - Band B

Estimated Annual Council Tax Cost - £1,914

Tenure - Freehold

Conservation Area - Derby Park

Flood Risk

Rivers & Seas: Very Low

Surface Water: High

Satellite / Fibre TV Availability - BT, Sky

(Data source from Sprift)

'Unusually good at what we do'

Sell with a multi - "National award winning Estate Agent!"

'Straightforward Sales & Lettings'

These particulars do not form part of any offer or contract and must not be relied upon as statements or representations of fact. Any areas, measurements or distances are approximate. The text, photographs and plans are for guidance only and are not necessarily comprehensive. It should not be assumed that the property has all the necessary planning, building regulation or other consents and we have not tested services, equipment or facilities. Purchasers must satisfy themselves by inspection or otherwise.