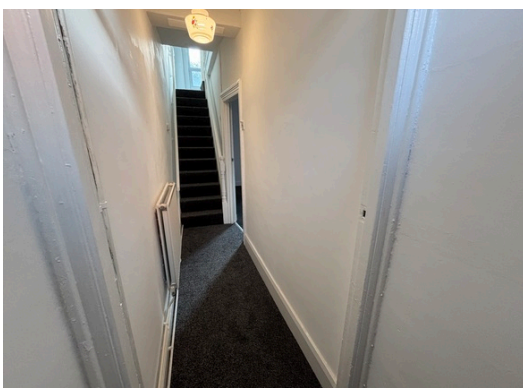
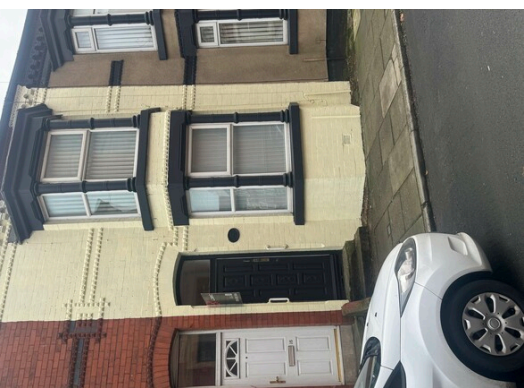


Hartwell Street, Litherland  
Litherland, L21

Let  
£800 per month



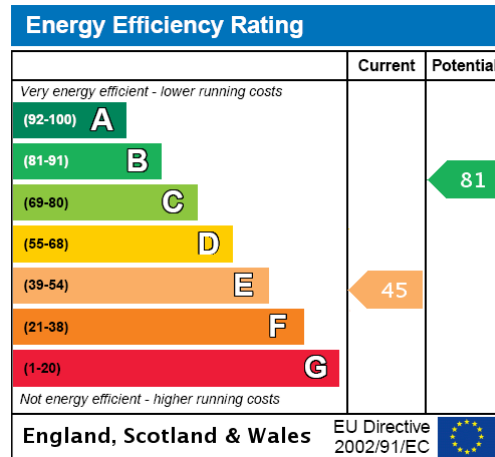
- \*Two bedroom newly refurbished terraced house
- \*open plan lounge / dining room
- \*fitted kitchen
- \*Two first floor bedroom and bathroom
- \*Rear yard
- \*On street parking



97 | SOUTH ROAD | WATERLOO | L22 0LR  
Tel: 0151 920 2404  
E-mail: [info@logicstates.co.uk](mailto:info@logicstates.co.uk)







Local Authority:  
Sefton Council

Council Tax:  
Band A

Council tax Estimate:  
£1,559 pa

Mobile (based on calls indoors):  
O2  
Vodafone  
EE  
Three

Broadband (estimated speeds):  
Standard 7 mbps  
Superfast 80 mbps  
Ultrafast 9000 mbps

Satellite & Cable TV Availability:  
BT  
Sky  
Virgin

These particulars do not form part of any offer or contract and must not be relied upon as statements or representations of fact. Any areas, measurements or distances are approximate. The text, photographs and plans are for guidance only and are not necessarily comprehensive. It should not be assumed that the property has all the necessary planning, building regulation or other consents and we have not tested services, equipment or facilities. Purchasers must satisfy themselves by inspection or otherwise.