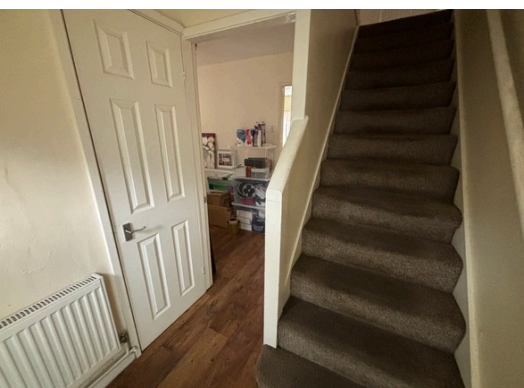
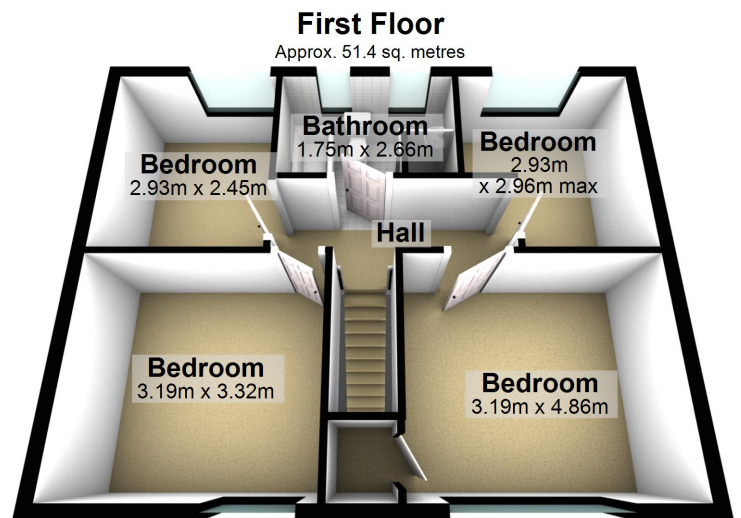
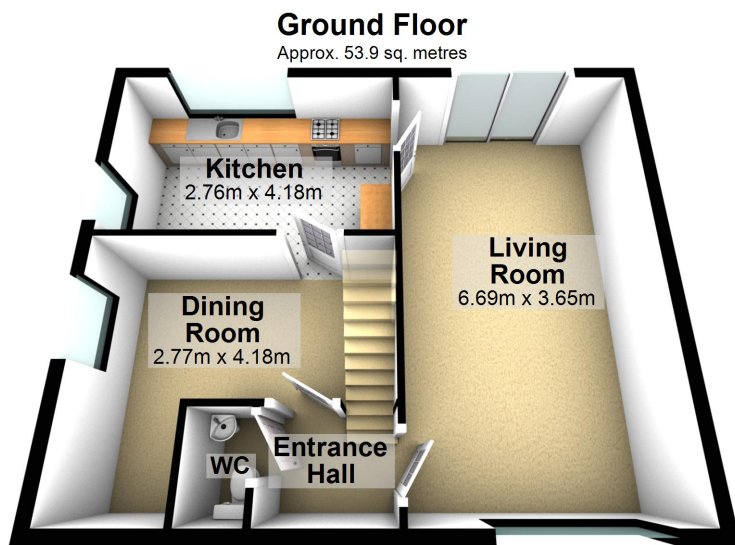




- \*Four Bedroom end town house
- \*Gardens
- \*C/heating and Double Glazed Windows
- \*Lounge with french patio door
- \*Breakfast Kitchen
- \*Utility room adjacent to kitchen storage







**Total area: approx. 105.4 sq. metres**

Whilst every attempt has been made to ensure the accuracy of the floor plan contained here, measurements of doors, windows, rooms and any other item are approximate and no responsibility is taken for any error, omission or misstatement.  
Plan produced using PlanUp.

These particulars do not form part of any offer or contract and must not be relied upon as statements or representations of fact. Any areas, measurements or distances are approximate. The text, photographs and plans are for guidance only and are not necessarily comprehensive. It should not be assumed that the property has all the necessary planning, building regulation or other consents and we have not tested services, equipment or facilities. Purchasers must satisfy themselves by inspection or otherwise.



- \*Four Bedroom end town house
- \*Gardens
- \*C/heating and Double Glazed Windows
- \*Lounge with french patio door
- \*Breakfast Kitchen
- \*Utility room adjacent to kitchen storage
- \*Potential to open up kitchen storage room to one room
- \*Family bathroom
- \*Freehold

Title Number - MS314090

Local Authority - Sefton

Council tax - Band A

Estimated Annual Council Tax Cost - £1,559

Tenure - Freehold

Conservation Area - No

Flood Risk

Rivers & Seas: No Risk

Surface Water: Low

Satellite / Fibre TV Availability - BT, Sky, Virgin

(Data source from Sprift)

'Unusually good at what we do'

Sell with a multi - "National award winning Estate Agent!"

'Straightforward Sales & Lettings'

These particulars do not form part of any offer or contract and must not be relied upon as statements or representations of fact. Any areas, measurements or distances are approximate. The text, photographs and plans are for guidance only and are not necessarily comprehensive. It should not be assumed that the property has all the necessary planning, building regulation or other consents and we have not tested services, equipment or facilities. Purchasers must satisfy themselves by inspection or otherwise.