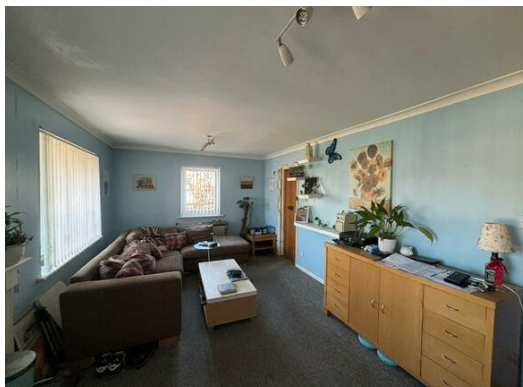




- *Two Bedroom Flat
- *Duplex
- *Ample Visitors Parking
- *Canal Side
- *Conveniently Located For All Local Amenities and Public Transport





Energy Efficiency Rating		
	Current	Potential
Very energy efficient - lower running costs		
(92-100) A		
(81-91) B		
(69-80) C		
(55-68) D	55	68
(39-54) E		
(21-38) F		
(1-20) G		
Not energy efficient - higher running costs		
England, Scotland & Wales	EU Directive 2002/91/EC	

- *Two Bedroom Flat
- *Duplex
- *Ample Visitors Parking
- *Canal Side
- *Conveniently Located For All Local Amenities and Public Transport

*Straightforward Sales & Lettings

Title Number - MS247246

Local Authority - Sefton

Council tax - Band A

Estimated Annual Council Tax Cost - £1,559

Tenure - Leasehold

Lease Start Date 21/10/1986

Lease End Date - 15/05/2193

Lease Term - 125 years from 22 October 1986

Lease Term Remaining - 87 Years

Conservation Area - No

Flood Risk

Rivers & Seas: No Risk

Surface Water: High

Satellite / Fibre TV Availability - BT, SKY

Mobile: 02, Three, EE Vodafone

(Data Source From Sprift)

97 | SOUTH ROAD | WATERLOO | L22 0LR
Tel: 0151 920 2404
E-mail: info@logicstates.co.uk





Unusually Good at what we do

Sell with a multi - "National award winning Estate Agent!"

These particulars do not form part of any offer or contract and must not be relied upon as statements or representations of fact. Any areas, measurements or distances are approximate. The text, photographs and plans are for guidance only and are not necessarily comprehensive. It should not be assumed that the property has all the necessary planning, building regulation or other consents and we have not tested services, equipment or facilities. Purchasers must satisfy themselves by inspection or otherwise.