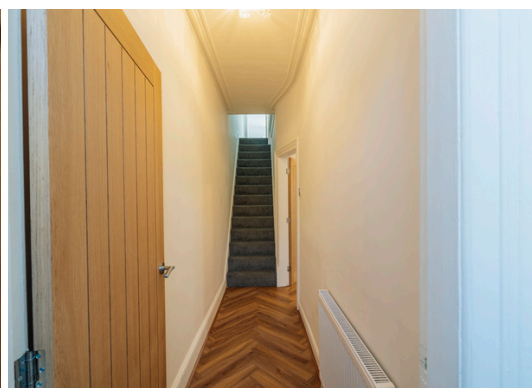
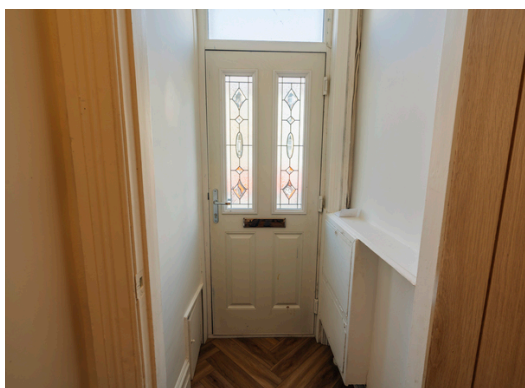


Argo Road, Waterloo  
Waterloo, L22

Freehold  
£220,000



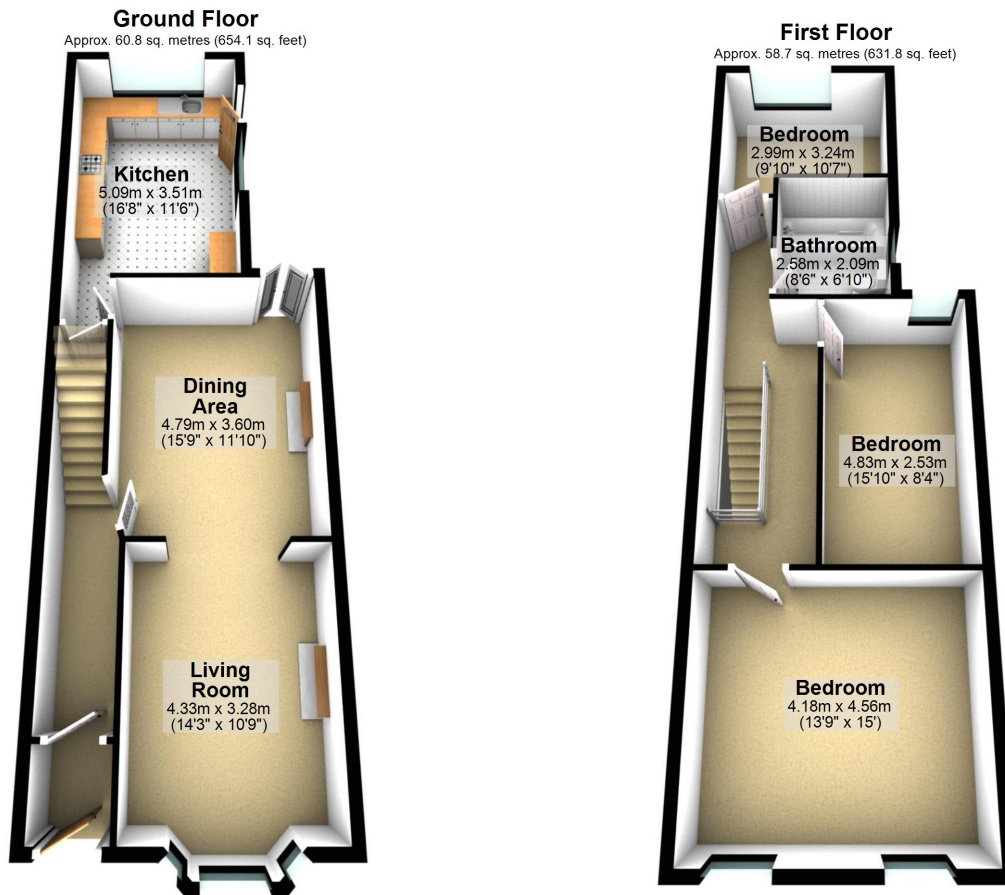
- \*Newly Refurbished 3 Bedroom Mid Terrace
- \*South Faces Rear Courtyard
- \*Oak Doors
- \*Log Burner
- \*New Central Heating
- \*Newly Decorated Bathroom



97 | SOUTH ROAD | WATERLOO | L22 0LR  
Tel: 0151 920 2404  
E-mail: [info@logicstates.co.uk](mailto:info@logicstates.co.uk)







Total area: approx. 119.5 sq. metres (1285.9 sq. feet)

Whilst every attempt has been made to ensure the accuracy of the floor plan contained here, measurements of doors, windows, rooms and any other item are approximate and no responsibility is taken for any error, omission or misstatement.  
Plan produced using PlanUp.

These particulars do not form part of any offer or contract and must not be relied upon as statements or representations of fact. Any areas, measurements or distances are approximate. The text, photographs and plans are for guidance only and are not necessarily comprehensive. It should not be assumed that the property has all the necessary planning, building regulation or other consents and we have not tested services, equipment or facilities. Purchasers must satisfy themselves by inspection or otherwise.



Energy Efficiency Rating		
	Current	Potential
Very energy efficient - lower running costs		
(92-100) <b>A</b>		
(81-91) <b>B</b>		86
(69-80) <b>C</b>		
(55-68) <b>D</b>	63	
(39-54) <b>E</b>		
(21-38) <b>F</b>		
(1-20) <b>G</b>		
Not energy efficient - higher running costs		
England, Scotland & Wales	EU Directive 2002/91/EC	

Book your viewing today!

'Straightforward Sales & Lettings'

Title Number - MS401956

Local Authority - Sefton

Council Tax - Band B

Estimated Annual Council Tax Cost - £1,819

Tenure - Freehold

Conservation Area - No

Broadband (estimated speeds)

Standard 15 mbps

Superfast 47 mbps

Ultrafast 1000 mbps

Flood Risk

Rivers & Seas: No Risk

Surface Water: High

Satellite / Fibre TV Availability - BT, Sky, Virgin

Mobile Coverage - O2, EE, Three, Vodafone

(Data source from Sprift)

'Unusually good at what we do'

Sell with a multi - "National award winning Estate Agent!"

97 | SOUTH ROAD | WATERLOO | L22 0LR

Tel: 0151 920 2404

E-mail: [info@logicstates.co.uk](mailto:info@logicstates.co.uk)





These particulars do not form part of any offer or contract and must not be relied upon as statements or representations of fact. Any areas, measurements or distances are approximate. The text, photographs and plans are for guidance only and are not necessarily comprehensive. It should not be assumed that the property has all the necessary planning, building regulation or other consents and we have not tested services, equipment or facilities. Purchasers must satisfy themselves by inspection or otherwise.