

Albury Road, Kirkby
Liverpool, L32

Freehold
£100,000



- *Three Bedroom Terraced House
- *Two Reception Rooms
- *Conservatory
- *Utility/Storage Room
- *Off Road Parking
- *Spacious Rear Garden



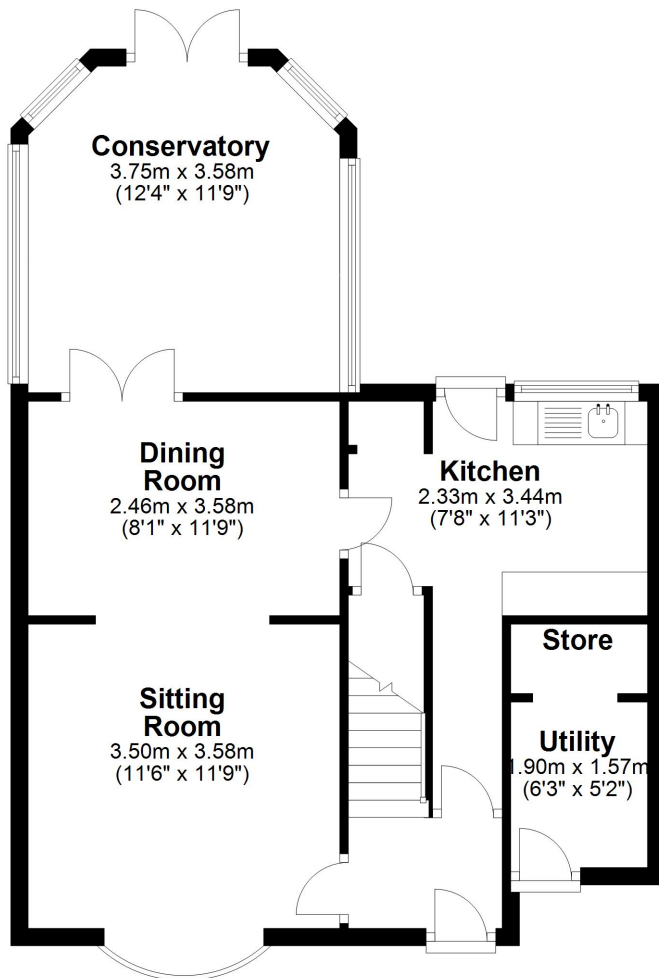
97 | SOUTH ROAD | WATERLOO | L22 0LR
Tel: 0151 920 2404
E-mail: info@logicstates.co.uk





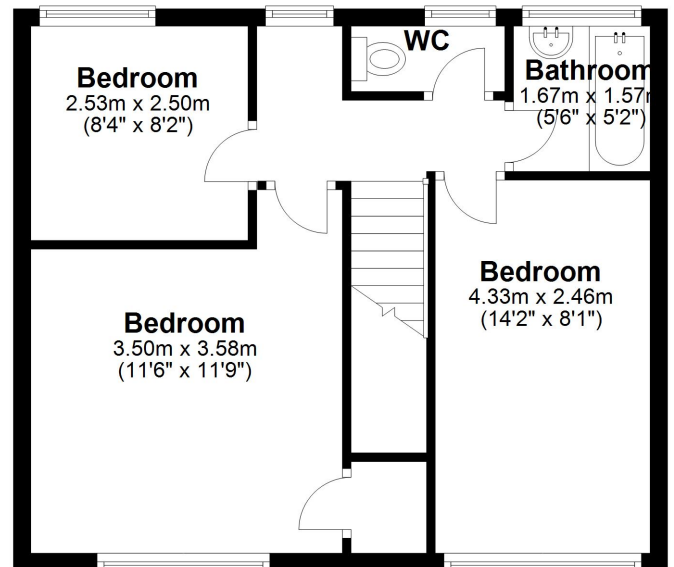
Ground Floor

Approx. 55.1 sq. metres (593.3 sq. feet)



First Floor

Approx. 43.4 sq. metres (466.8 sq. feet)



Total area: approx. 98.5 sq. metres (1060.1 sq. feet)

These particulars do not form part of any offer or contract and must not be relied upon as statements or representations of fact. Any areas, measurements or distances are approximate. The text, photographs and plans are for guidance only and are not necessarily comprehensive. It should not be assumed that the property has all the necessary planning, building regulation or other consents and we have not tested services, equipment or facilities. Purchasers must satisfy themselves by inspection or otherwise.



'Straightforward Sales & Lettings'

Title Number - MS497528

Local Authority - Knowsley

Council tax - Band A

Estimated Annual Council Tax Cost - £1,365

Tenure - Freehold

Conservation Area - No

Flood Risk

Rivers & Seas: Very low

Surface Water: High

Satellite / Fibre TV Availability - BT, Sky, Virgin

Broadband (estimated speeds)

Standard 19 mbps

Superfast 80 mbps

Ultrafast 1000 mbps

Mobile Coverage - O2, EE, Three, Vodafone

(Data source from Sprift)

'Unusually good at what we do'

Sell with a multi - "National award winning Estate Agent !"

These particulars do not form part of any offer or contract and must not be relied upon as statements or representations of fact. Any areas, measurements or distances are approximate. The text, photographs and plans are for guidance only and are not necessarily comprehensive. It should not be assumed that the property has all the necessary planning, building regulation or other consents and we have not tested services, equipment or facilities. Purchasers must satisfy themselves by inspection or otherwise.